

EL PASO COUNTY - COLORADO4307004005
6550 CHIEF RDTotal Market Value
\$242,531**OVERVIEW**

Owner:	ADAMS LAVELLE DOREEN, THACKER MICHAEL LEE, REYNOLDS WILLIAM JOSEPH
Mailing Address:	10703 LONGS WAY PARKER CO, 80138-8095
Location:	6550 CHIEF RD
Tax Status:	Taxable
Zoning:	A-5
Plat No:	7108
Legal Description:	LOT 19 ARROWHEAD ESTATES FIL NO 1

MARKET & ASSESSMENT DETAILS

	Market Value	Assessed Value
Land	\$50,800	\$3,630
Improvement	\$191,731	\$13,830
Total	\$242,531	\$17,460

RESIDENTIAL - RANCH (1)Market Value **\$128,273**

Assessment Rate	7.15	Above Grade Area	1,320
Bldg #	1	First Floor Area	1,320
Style Description	RANCH	Above First Floor Area	0
Property Description	FRAME AVERAGE QUALITY	Lower Level Living Area	0
Year Built	1894	Total Basement Area	-
Dwelling Units	1	Finished Basement Area	
Number of Rooms	6	Garage Description	Detached
Number of Bedrooms	3	Garage Area	240
Number of Baths	1.00	Carport Area	-

RESIDENTIAL - RANCH (2)Market Value **\$49,884**

Assessment Rate	7.15	Above Grade Area	504
Bldg #	2	First Floor Area	504
Style Description	RANCH	Above First Floor Area	0
Property Description	FRAME FAIR QUALITY	Lower Level Living Area	0
Year Built	1924	Total Basement Area	288
Dwelling Units	1	Finished Basement Area	
Number of Rooms	3	Garage Description	-
Number of Bedrooms	1	Garage Area	-
Number of Baths	1.00	Carport Area	-

COMMERCIAL - SHEDS/MISCL (1)Market Value **\$208**

Assessment Rate	7.15	Sprinkler	N
Bldg #	1	Elevator	N
Use	Sheds/Miscl	Occup 1	477
Year Built	1960	Occup 2	
Area	242	HVA 1	
Class	S	HVA 2	
Quality	1.0	Wall Height	10
Stories	1	Land Size	583704
Perimeter	66	Neigh #	99
# Units			

COMMERCIAL - FARM STRUCTURES (BARN) (2)Market Value **\$3,017**

Assessment Rate	7.15	Sprinkler	N
Bldg #	2	Elevator	N
Use	FARM STRUCTURES (BARN)	Occup 1	102
Year Built	1960	Occup 2	
Area	1936	HVA 1	
Class	D	HVA 2	
Quality	2.0	Wall Height	10
Stories	1	Land Size	583704
Perimeter	176	Neigh #	99
# Units			

COMMERCIAL - FARM STRUCTURES (BARN) (3)Market Value **\$2,808**

Assessment Rate	7.15	Sprinkler	N
Bldg #	3	Elevator	N
Use	FARM STRUCTURES (BARN)	Occup 1	102
Year Built	1963	Occup 2	
Area	1260	HVA 1	
Class	D	HVA 2	
Quality	2.0	Wall Height	7
Stories	1	Land Size	583704
Perimeter	164	Neigh #	99
# Units			

COMMERCIAL - STABLE (4)Market Value **\$572**

Assessment Rate	29.00	Sprinkler	N
Bldg #	4	Elevator	N
Use	STABLE	Occup 1	378
Year Built	1964	Occup 2	
Area	720	HVA 1	
Class	S	HVA 2	
Quality	1.0	Wall Height	8
Stories	1	Land Size	583704
Perimeter	49	Neigh #	99
# Units			

COMMERCIAL - SHEDS/MISCL (5)Market Value **\$186**

Assessment Rate	7.15	Sprinkler	N
Bldg #	5	Elevator	N
Use	Sheds/Miscl	Occup 1	477
Year Built	1966	Occup 2	
Area	216	HVA 1	
Class	C	HVA 2	
Quality	2.0	Wall Height	8
Stories	1	Land Size	583704
Perimeter	60	Neigh #	99
# Units			

COMMERCIAL - SHEDS/MISCL (6)Market Value **\$1,944**

Assessment Rate	7.15	Sprinkler	N
Bldg #	6	Elevator	N
Use	Sheds/Miscl	Occup 1	477
Year Built	1969	Occup 2	
Area	400	HVA 1	
Class	C	HVA 2	
Quality	2.0	Wall Height	7
Stories	1	Land Size	583704
Perimeter	80	Neigh #	99
# Units			

COMMERCIAL - SHEDS/MISCL (7)Market Value **\$453**

Assessment Rate	7.15	Sprinkler	N
Bldg #	7	Elevator	N
Use	Sheds/Miscl	Occup 1	477
Year Built	1969	Occup 2	
Area	360	HVA 1	
Class	D	HVA 2	
Quality	1.0	Wall Height	7
Stories	1	Land Size	583704
Perimeter	56	Neigh #	99
# Units			

COMMERCIAL - SHEDS/MISCL (8)Market Value **\$3,178**

Assessment Rate	7.15	Sprinkler	N
Bldg #	8	Elevator	N
Use	Sheds/Miscl	Occup 1	477
Year Built	1973	Occup 2	
Area	4660	HVA 1	
Class	S	HVA 2	
Quality	2.0	Wall Height	10
Stories	1	Land Size	583704
Perimeter	294	Neigh #	99
# Units			

COMMERCIAL - SHEDS/MISCL (9)Market Value **\$326**

Assessment Rate	7.15	Sprinkler	N
Bldg #	9	Elevator	N
Use	Sheds/Miscl	Occup 1	477
Year Built	1973	Occup 2	
Area	400	HVA 1	
Class	D	HVA 2	
Quality	1.0	Wall Height	10
Stories	1	Land Size	583704
Perimeter	80	Neigh #	99
# Units			

COMMERCIAL - SHEDS/MISCL (10)Market Value **\$343**

Assessment Rate	7.15	Sprinkler	N
Bldg #	10	Elevator	N
Use	Sheds/Miscl	Occup 1	477
Year Built	1977	Occup 2	
Area	432	HVA 1	
Class	C	HVA 2	
Quality	2.0	Wall Height	8
Stories	1	Land Size	583704
Perimeter	60	Neigh #	99
# Units			

COMMERCIAL - SHEDS/MISCL (11)Market Value **\$163**

Assessment Rate	7.15	Sprinkler	N
Bldg #	11	Elevator	N
Use	Sheds/Miscl	Occup 1	477
Year Built	1977	Occup 2	
Area	192	HVA 1	
Class	D	HVA 2	
Quality	1.0	Wall Height	7
Stories	1	Land Size	583704
Perimeter	56	Neigh #	99
# Units			

COMMERCIAL - SHEDS/MISCL (12)Market Value **\$376**

Assessment Rate	7.15	Sprinkler	N
Bldg #	12	Elevator	N
Use	Sheds/Miscl	Occup 1	477
Year Built	1962	Occup 2	
Area	240	HVA 1	
Class	D	HVA 2	
Quality	1.0	Wall Height	7
Stories	1	Land Size	583704
Perimeter	64	Neigh #	99
# Units			

LAND DETAILS

Sequence Number	Land Use	Assessment Rate	Area	Market Value
1	SINGLE FAMILY RES.	7.150	13.4 Acres	\$45,800
2	WELL AND SEPTIC	7.150	0	\$5,000

SALES HISTORY

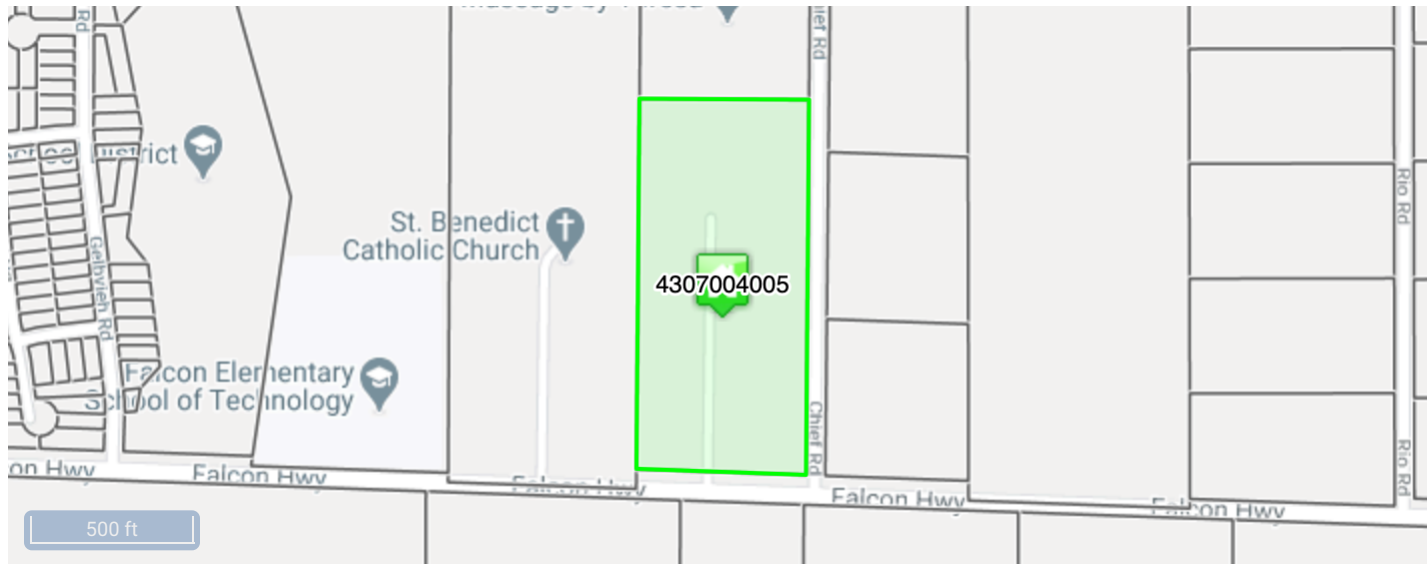
	Sale Date	Sale Price	Sale Type	Reception
+	08/05/2019	\$0	-	219089893
+	08/05/2019	\$0	-	219089894
+	03/18/2003	\$0	-	203056106
+	12/20/2002	\$0	-	202227642
+	12/20/2002	\$0	-	202227643
+	02/03/1995	\$0	-	95012160
+	04/18/1988	\$0	-	1692425

TAX ENTITY AND LEVY INFORMATION

County Treasurer Tax Information

Tax Area Code: **SCF** Levy Year: **2019** Mill Levy: **70.387**

Taxing Entity	Levy	Contact Name/Organization	Contact Phone
EL PASO COUNTY	7.222	FINANCIAL SERVICES	(719) 520-6400
EPC ROAD & BRIDGE (UNSHARED)	0.330	-	(719) 520-6498
EL PASO COUNTY SCHOOL NO 49	43.189	BRETT RIDGWAY	(719) 495-1130
PIKES PEAK LIBRARY	3.731	MIKE VARNET	(719) 531-6333
FALCON FIRE PROTECTION	14.886	TRENT HARWIG	(719) 495-4050
UPPER BLK SQUIRREL CRK GROUND WATER	1.029	TRACY DORAN	(719) 347-0704
EL PASO COUNTY CONSERVATION	0.000	PAMELA DAVISON	(719) 632-9598



No Photo Available



Disclaimer

We have made a good-faith effort to provide you with the most recent and most accurate information available. However, if you need to use this information in any legal or official venue, you will need to obtain official copies from the Assessor's Office. Do be aware that this data is subject to change on a daily basis. If you believe that any of this information is incorrect, please call us at (719) 520-6600.